

# CENTRAL FLORIDA communities, INC.

## Central Florida Communities – Central Region

To strive each day for excellence...by supporting and encouraging each individual to achieve the highest level of independence in an environment that promotes choice, dignity, happiness and opportunities to participate in decisions with much control and autonomy. To maintain an environment and service delivery system which offers companionship, contentment and joy.



### Resident/Family Testimonies

COMMENTS FROM RECENT PARENT/GUARDIAN QUESTIONNAIRES:



- "I am most pleased with the cleanliness of the facility and the friendliness of staff."
- "I think the health and medical care of my son is excellent."
- "They have a good nursing staff that does a great job."
- The staff is very diligent about notifying us if anything happens to our daughter."
- "My son enjoys the wide variety of community outings."
- "I am most pleased by the open communication between staff and myself."
- "Great home-like atmosphere."

### Locations

Our programs are located in intimate, quiet settings with beautifully landscaped grounds. They feature nicely furnished living areas, and homey bedrooms decorated by individual resident choice.



Washington Square  
1401 US Highway 1  
Titusville, FL 32796



Howell Branch Court  
3664 Howell Branch Road  
Winter Park, FL 32792



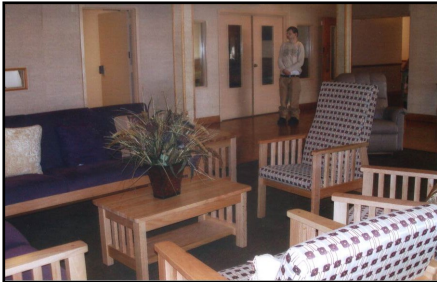
Lakeview Court  
920 West Kennedy Blvd  
Orlando, FL 32810

## **Programs Available to Residents**

We offer a comprehensive array of services and programs which are unique to each individual based on thorough annual assessments and support team discussions including parents, legal guardians, and most importantly, the individual being served. Home style meals are prepared in the home by our cooks.



## **Staff**



Offering a wide array of benefits and competitive pay. Central Florida Communities employs many dedicated and long term staff providing an excellent quality of care and compassion for the individuals we serve. Many have worked here for over twenty years and have gone through extensive orientation and on the job training.

## **Unique Features**

Central Florida Communities employ a full time team of therapists providing consistent and superior services to our residents. This therapeutic team includes a full time Occupational Therapist, Physical Therapist, Speech Therapist, Registered Dietician, and Certified Behavior Analyst. The team works at all three ICF/DD locations and is highly involved in each individual's support planning and programming.



## **Contact Information**

Debbie Gaytan  
407-645-3211 x 1176  
DGaytan@d-s-i.com  
[www.d-s-i.com](http://www.d-s-i.com)